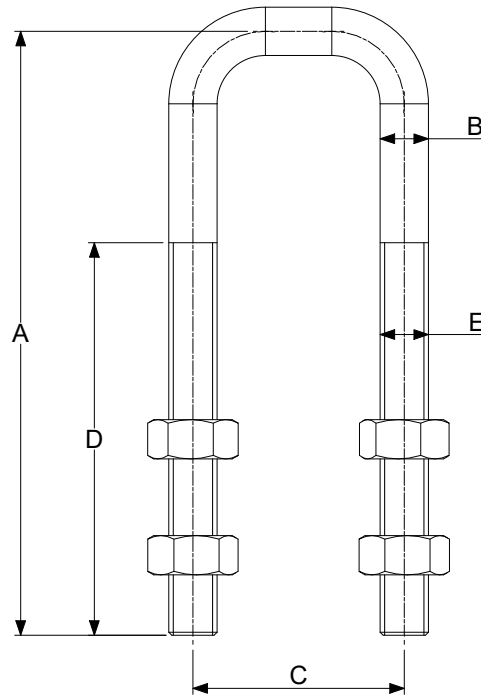
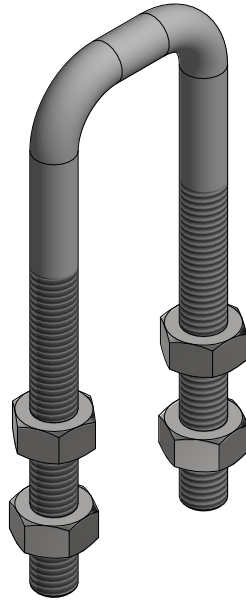




Replacement hook assemblies
Alternative hook lengths



U-BAR DIMENSIONS									
CLAMP PART No.	U-BAR PART No.	STAINLESS PART No.	DIM A	DIM B	DIM C	DIM D	DIM E	WEIGHT (Kg)	
HC14, HC14-100, HC14-150, HC14-200,	UB14-100	N/A	100	8	35	64.5	M8x1.25	0.40	
	UB14-150	N/A	150	8	35	80	M8x1.25	0.44	
	UB14-200	N/A	200	8	35	80	M8x1.25	0.48	
HC19, HC19-150, HC19-200, HC-250,	UB19-150	N/A	158.75	12.7	60.3	76.2	1/2-13 UNC	1.84	
	UB19-200	N/A	210	12.7	60.3	95.25	1/2-13 UNC	1.92	
	UB19-250	N/A	260	12.7	60.3	95.25	1/2-13 UNC	2.04	
HC22H, HC22H-80, HC22H-140,	HC22V, HC22V-80, HC22V-140,	UB22-80	UB22-80 SS	83	4	24.2	50	M4x0.7	0.10
		UB22-140	UB22-140 SS	138	4	24.2	50	M4x0.7	0.12
HC24H, HC24H-100, HC24H-150, HC24H-200,	HC24V, HC24V-100, HC24V-150, HC24V-200,	UB24-100	UB24-100 SS	110	6	31	65	M6x1	0.27
		UB24-150	UB24-150 SS	147	6	31	65	M6x1	0.29
		UB24-200	UB24-200 SS	197	6	31	65	M6x1	0.33
HC27H, HC27H-110, HC27H-170, HC27H-250,	HC27V, HC27V-110, HC27V-170, HC27V-250,	UB27-110	UB27-110 SS	111	8	44	81	M8x1.25	0.62
		UB27-170	UB27-170 SS	171	8	44	111	M8x1.25	0.67
		UB27-250	UB27-250 SS	246	8	44	111	M8x1.25	0.72