



Heavy duty hand clamps fitted with sensors

Clamp signals in closed position.

Proximity sensor with M8 connector plug.

Available on all M20 & M30 models except: M20SCH, M20UB, M20SB, M20TB & M30SCH

To Order:

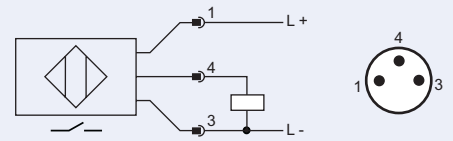
To order add **-S1** to clamp no. eg: **M20CH-S1**



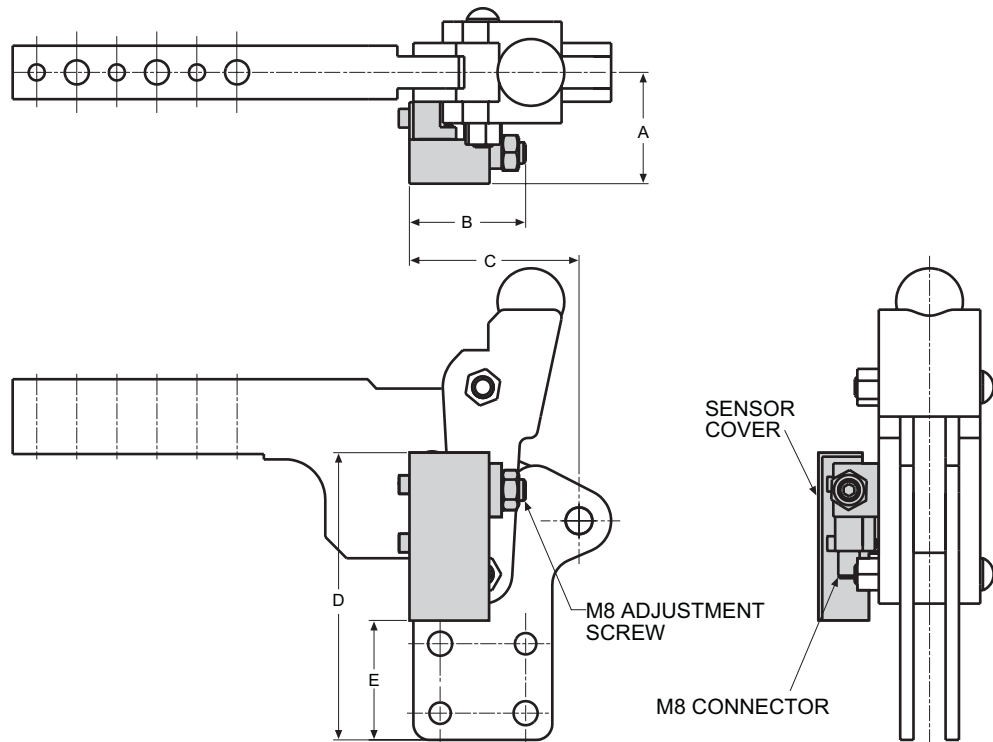
Technical Data For Switch.

Electrical Design	DC PNP
Output	Normally open
Operating Voltage (V)	10 ...36 DC
Current Rating (mA)	200
Switching Frequency (Hz)	800
Current Consumption (mA)	<15 (24V)
Voltage Drop (V)	<1
Short Circuit Protection	No
Reverse Polarity Protection	No
Housing Material	PBTP
Operating Temperature (°C)	-25...+80
Output Status Indication LED	Red
Electrical Connection	M8

Electrical connection,



Note: Lead not supplied. optional extra.



	A	B	C	D	E
M20	44	48	68	112	45
M30	46	48	81	130	67