

VERTICAL ACTION

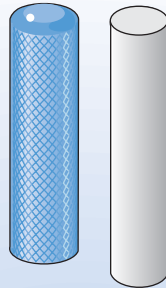
Ball Ended Series



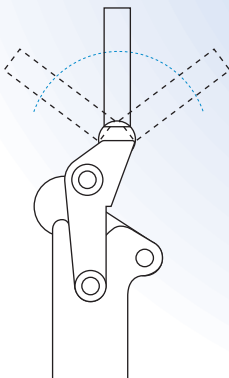
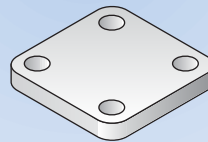
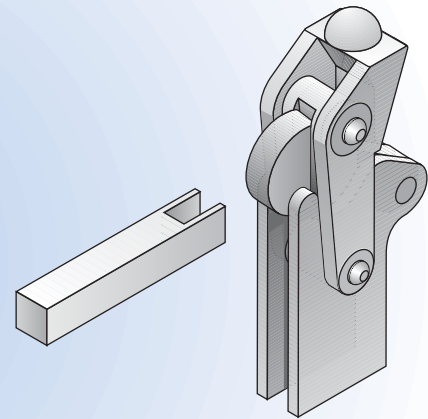
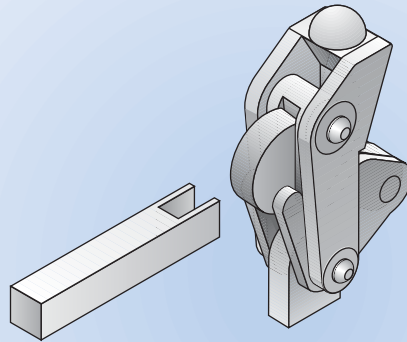
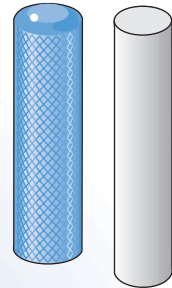
The **Ball Ended Series** are a range of heavy duty clamps specifically designed for high production and heavy manufacturing operations. Two models are available - the straight sided CH Series for template mounting and the SCH Series for variable base mounting.

Handles, grips, bases and arms are available. Where the complete clamp unit is required please refer to the **Vertical Action Heavy Duty clamps**.

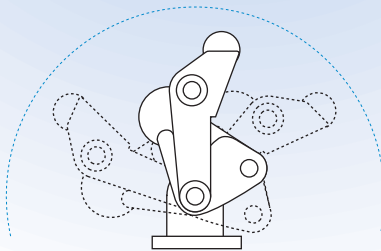
SCH Series
M18SCH
M19SCH
M20SCH
M30SCH
M40SCH



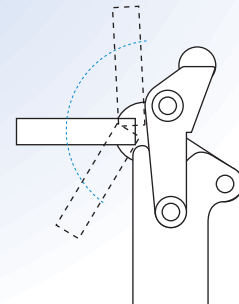
CH Series
M18CH
M19CH
M20CH
M30CH
M40CH



The handle can be positioned to suit application

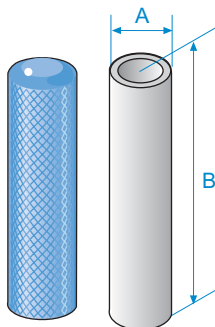


The base can be positioned to suit application



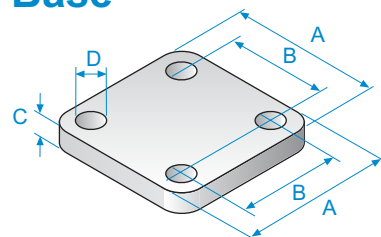
The bar can be positioned to suit application

Handles Grips



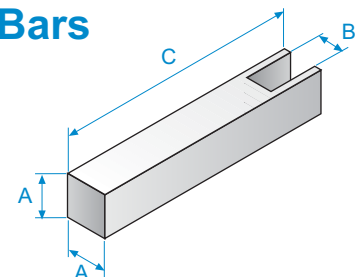
Handle No.	A	B	
M18H	22	75	M18CH, M18SCH
M19H	22	90	M19CH, M19SCH
M20H	22	100	M20CH, M20SCH
M30H	26	150	M30CH, M30SCH
M40H	26	175	M40CH, M40SCH

Base



Base No.	A	B	C	D
M18B	45	32	6	6.5
M19B	50	35	6	6.5
M20B	65	45	8	8.5
M30B	70	51	10	8.5
M40B	90	70	12	10.0

Clamp Bars



Bar No.	A	B	C	
M18CB	20	8	100	M18CH, M18SCH
M19CB		10		M19CH, M19SCH
M20CB		12		M20CH, M20SCH
M30CB	25	16	125	M30CH, M30SCH
M40CB		19		M40CH, M40SCH

Refer to accessory pages for details on handle retaining clips